

Accessing NetClassroom

***Note** that the web address begins with **https** as opposed to **http**.

- Go to <https://www2.ehsbr.org/netclassroom> access your child's grades.
- Enter your **User ID** and **Password**. Click **Login**.



- The Main Menu page will appear.



Grades Page

On the Main Menu page, click on the **Grades** icon.



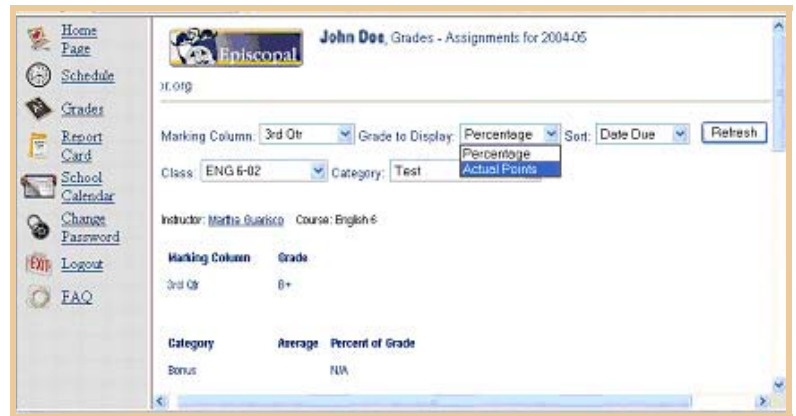
- Scroll up and down and side to side to view your child's grades.
- To view specific assignment grades, click on a **grade** or **check mark picture**.

Course	Class	Instructor	1st Qtr	2nd Qtr	1st Sem Ex	1st Sem	2nd Qtr	4th Qtr	2nd Sem Ex	2nd Sem	Progress 1	Progress 2	Progress 3
Band 6 Beginning	BAND 6 Begin - 01	Paul Taranto					Δ			Δ			Δ
Band 6 Combined	BAND 6C - 01	Paul Taranto					Δ			Δ			
Chapel 6	CHAPEL 6 - 01												
English 6	ENG 6 - 01	Martha Gustin	Δ	Δ		Δ	Δ	Δ		Δ	Δ	Δ	Δ

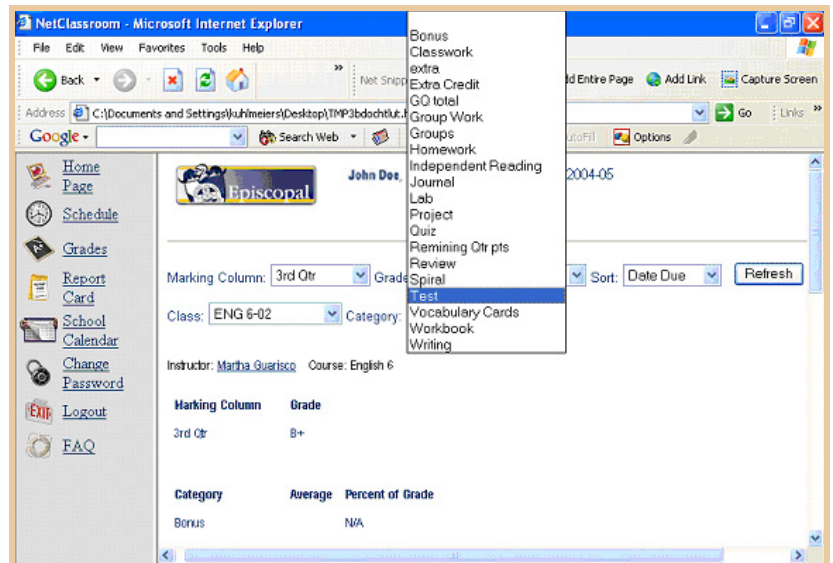
Grades-Assignments Page

To view specific assignment grades you must access the **Grades-Assignments** page. Please note that this page is **not** listed on the side menu nor the main menu.

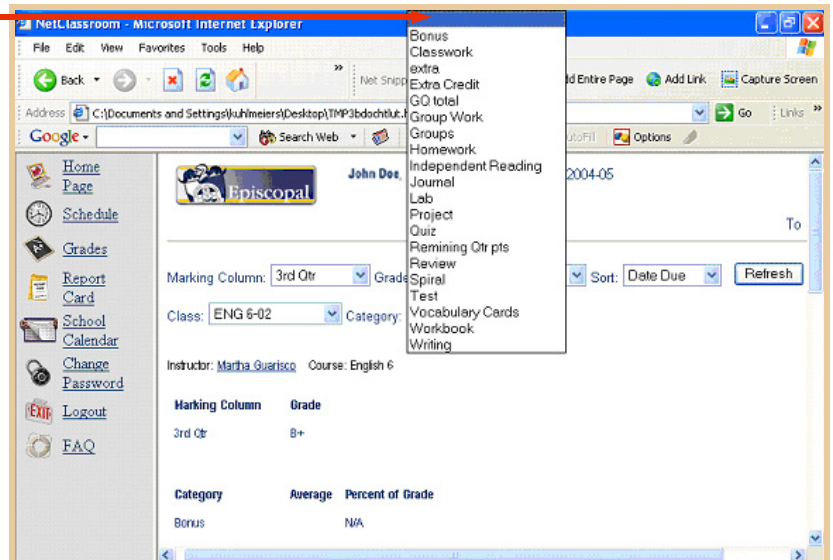
- Go to the **Grades** page
- Click a grade or check mark picture in the Grades grid.
- This page, the **Grades-Assignments** page will open. →
- Select the correct **Marking Column**.
- Choose **Actual Points** or **Percentage** in the **Grades to Display** menu.



- Choose a Category (i.e. test, quiz, homework) to view a single category of assignments.



- Choose the top white space on the menu to view **all** categories.
- Click **Refresh**.
- Scroll down and the student assignments will appear.
- ***NOTE:** You must always click **Refresh** when you make a change.



Grades-Assignments Page

Scroll down and you will see the assignments by **Category** or **All** assignments.

Category

Instructor: [Martha Guariso](#) Course: English 6

Marking Column **Grade**

3rd Qtr B+

Category **Average** **Percent of Grade**

Test 90.87 N/A

Assignment	Category	Grade	Comments
dol test2	Test	90%	
v.av test	Test	96.667%	
d.o.l.test	Test	90%	
pos test	Test	87.342%	

In the Grade column: **M** stands for a Missing Grade and **X** stands for an Exempt Grade

All Assignments

Assignment	Category	Grade	Maximum Points	Comments
hw2	Homework	34	35	
log	Independent Reading	35	75	
dol test2	Test	36	40	
newscast	Project	60	60	
pos skit	Groups	80	80	
bonus2	Bonus	0	0	
bonus	Bonus	0	0	
v.av test	Test	58	60	
d.o.l.test	Test	36	40	
hw	Homework	27	27	
verb quiz	Quiz	15	15	
pos test	Test	69	79	